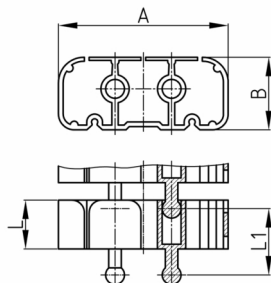


### Product Group KBKCLSB

Rectangular cable chain set made of PP for cable feed to writing and working tables, including steel base plate and table mounting

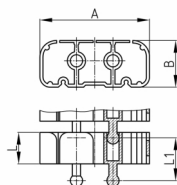
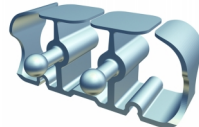


#### Standard Colours

- black
- white
- uncoloured-translucent
- silver

#### Material

- Polypropylene (PP)
- Base: powder coated steel



### Product information

- Flexible cable ducting system for horizontal and vertical cable ducting.
- Any assembly with fixing elements "KBKCLZ1" or "KBKZ8S".

The chain links arranged displaceable to each other.

- 2 connectors for optimal force transmission, especially torque, pressure- and transverse forces
- Three-chamber-system for separating data- and power cables
- Extended or pushed together, rigid laying of the cable routing chain especially suitable for wall, furniture, undertable and ceiling mounting.
- The pushed together, rigid installation of the cable guide chain is conditionally suitable for low-traffic passage areas.
- Tool-free connection to all traded floor outlets by using "KBKZ10S / Clip-S Floor (CL+ FLII)".
- Tool-free and time saving installation of cables by zipper principle.
- Tool-free branching through distributors
- Optimized possibility for lateral squeeze-proof unthreading of the cables.
- 3-D movable and approx. 25 % lengthwise flexible
- Compatible with cable chain "KBKPRO", "KBKCUB", "KBKCMX" and "KBKFLII" (intermateable).
- Compatible with KBK Bridge
- Extensive range of adapters
- Complete packing in one box (assembled cable elements with desk fixing, base plate and screw set)

Order Number	A	B	L	L1	Element(s)	For up to x cable
	mm	mm	mm	mm	piece(s)	piece(s)
KBKCL SET-B 75 cm	53	23	15,5	21,5	33	20
KBKCL SET-B 125 cm	53	23	15,5	21,5	56	20