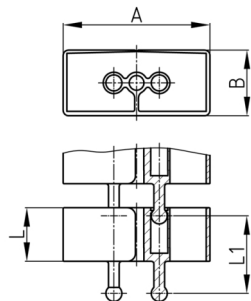


### Product Group KBKCMXSB

Rectangular cable chain set made of PP for cable feed to writing and working tables, including steel base plate and table mounting

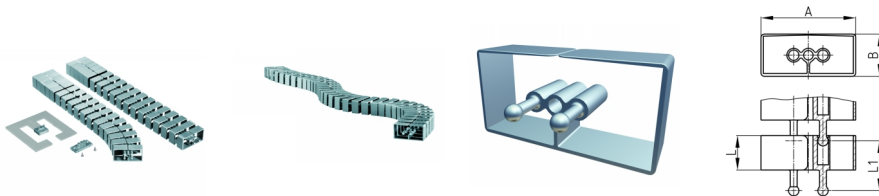


#### Standard Colours

- black
- white
- uncoloured-translucent
- silver

#### Material

- Plastic parts: Polypropylene (PP)
- Base: powder coated steel



### Product information

- Flexible cable ducting system for horizontal and vertical cable ducting.
- Any assembly possibilities with fixing elements "KBKCMXZ1" or "KBKZ8L".
- 

The chain links arranged displaceable to each other.

- 2 connectors for optimal force transmission, especially torque, pressure- and transverse forces
- Two-chamber-system for separating data and power lines
- Laying as a closed cable chain channel via blocking the chain.
- Closed centre channel to accommodate mounting rope "KBKZ2A" or hauling rope "KBKZ2B".
- Extended or pushed together, rigid laying of the cable routing chain especially suitable for wall, furniture, undertable and ceiling mounting.
- The pushed together, rigid installation of the cable guide chain is conditionally suitable for low-traffic passage areas.
- 2D/3D-movable
- Tool-free and time saving installation of cables by zipper principle.
- Tool-free branching through distributors
- Tool-free connection to all standard floor outlets by using "KBKZ10L / Clip-L Floor (PRO+CUB+CMX)".
- Optimized possibility for lateral squeeze-proof unthreading of the cables.
- The system is compatible with KBKCUB, KBKPRO, KBKCL and KBKFLII.
- Extensive range of adapters
- Complete packing in one box (assembled cable elements with desk fixing, base plate and screw set)

Order Number	A	B	L	L1	Element(s)	For up to x cable
	mm	mm	mm	mm	piece(s)	piece(s)
KBKCMX Set-B 60x75 cm	60	18	20		25	15
KBKCMX Set-B 60x125 cm	60	18	20		42	15
KBKCMX Set-B 75 cm	70	35	20	29	25	40
KBKCMX Set-B 125 cm	70	35	20	29	42	40