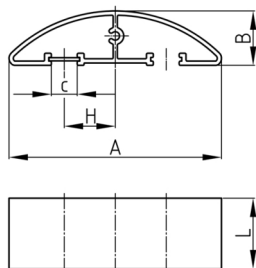


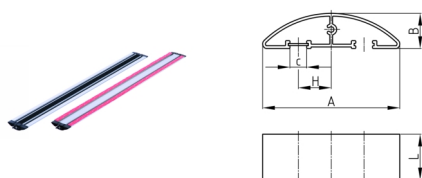
### Product Group KBKBD

Aluminium cable link KBK Bridge with pre-installed double-sided tape



#### Material

- anodize aluminium



#### Product information

- The system is compatible with KBKCUB, KBKPRO, KBKCL and KBKFLII.
- Curves with different radii and lengths can be realised with the various KBK systems.
- Any length of track can be bridged by extending it using individual KBKPROE cable chain links.
- Multiple KBK Bridges can be connected without using any tools.
- Pre-assembled Velcro system (hook tape) for non-slip fastening of the cable bridge on carpeted floors.
- Particularly tread-resistant and ideal for laying in busy passageways.
- The aluminium cable bridge is suitable for very high loads.
- Delivery including mounted swivelling connection joint
- Colour selection of the connection joint according customer requirements

| Order Number | A  | B  | C  | H  | L   |
|--------------|----|----|----|----|-----|
|              | mm | mm | mm | mm | mm  |
| KBKBD 50 cm  | 90 | 11 | 11 | 24 | 50  |
| KBKBD 100 cm | 90 | 11 | 11 | 24 | 100 |