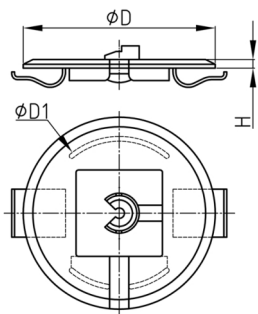


Product Group KBKZ20

System connection for cable chain KBKQUA with minor force transmission to suspended ceiling, wall and furniture



Standard Colours

- black
- silver
- white

Material

- Polyoxymethylene (POM, also Polyacetal)
- Polypropylene (PP)



Product information

- Only cable chain KBKQUA can be connected to KBKZ20.
- Elastic clamps on the back fix the system connection in drilling depths from 1 mm to 30 mm.
- All visible parts are from visco-plastic material with "iced" surface structure.
- System connection with minor force transmission to suspended ceilings:
- For connecting the cable chain to a plasterboard ceiling, the more stable POM version (only in white) of the system connection is recommended. Low forces acting on the cable chain are thus transferred directly into the suspended ceiling. The load-bearing capacity of the ceiling must be checked.
- The slot for the cable entry is closed with the corresponding insert.
- System connection with transmission of forces up to 100 kg on concrete slab:
- By separating the snap-in forks at the predetermined separation points, the system connection can be used as a "purely optical" cover (PP variant: silver, black, white). The tensile forces acting on the cable guide chain are introduced directly into the raw ceiling via a tension cable and a fastening sleeve. For this purpose, corresponding dowels are anchored in the raw ceiling and connected to the tension cable.
- For this type of application the following articles must be ordered additionally:
- Tension KBKZ2B
- Mounting sleeve KBKZ2C

Order Number	D	D1	H
	mm	mm	mm
KBKZ20 Cover Quadro	100	80	4,5
KBKZ20 Cover Quadro POM	100	80	4,5