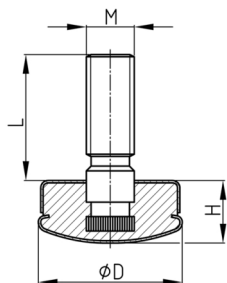


### Product Group RPMG

Adjusting screws with plastic base made of PE, nickel-coloured metal sliding surface and metal cover, thread bolt overmoulded

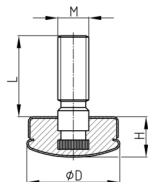


#### Standard Colours

- chrome-/ nickel coloured

#### Material

- Thread: zinc-plated steel
- Cover: nickel-plated steel
- Base: Polyethylene (PE)
- Slide base: nickel-plated steel



Order Number	D	H	L	M
	mm	mm	mm	
RPMG 30 / M8x25	30	16	25	M8
RPMG 30 / M10x25	30	16	25	M10