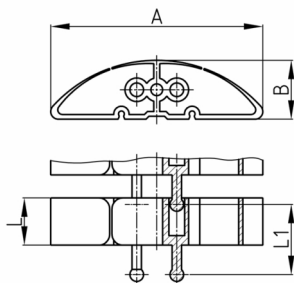


Product Group KBKPRO

Elliptical cable chain (one side planar) made of PP for horizontal and vertical cable ducting



Standard Colours

- black
- white
- uncoloured-translucent
- silver

Material

- Polypropylene (PP)



Product information

- Flexible cable ducting system for horizontal and vertical cable ducting.
- As rigid cable channel with stainless steel assembly pole and fixing element "KBKPROZ1" or "KBKZ8S" for any assembly.
- The chain links arranged displaceable to each other.
- 2 connectors for optimal force transmission, especially torque, pressure- and transverse forces
- Two-chamber-system for separating data and power lines
- Closed centre channel to accommodate mounting rope "KBKZ2A" or hauling rope "KBKZ2B".
- Extended or pushed together, rigid laying of the cable routing chain especially suitable for wall, furniture, undertable and ceiling mounting.
- The pushed-together, rigidly laid cable guide chain is particularly suitable for busy passageways.
- Tool-free connection to all standard floor outlets by using "KBKZ10L / Clip-L Floor (PRO+CUB+CMX)".
- Tool-free and time saving installation of cables by zipper principle.
- Possibility to unthread the cables from the side
- 3-D movable and approx. 25 % lengthwise flexible
- Tool-free branching through distributors
- Compatible with cable chain "KBKCL", "KBKCUB", "KBKCMX" and "KBKFLII" (intermateable).
- Compatible with KBK Bridge
- Extensive range of adapters
- Short time loads up to 150 kg for 5 chain elements at 20 °C room temperature• In passage areas, the tread resistance of the cable guide chain can be increased by up to 35% by blocking the chain links. • By using stainless steel assembly pole ("KBKZ2A") or hauling rope ("KBKZ2B") up to 100 kg traction
- KBKPROE = single element

Order Number	A	B	L	L1	Element(s)	For up to x cable
	mm	mm	mm	mm	piece(s)	piece(s)
KBKPRO 100 cm	90	24	20	29,5	34	30