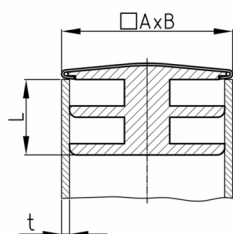


Product Group CRTM

Sight plugs made of PE with chrome-/nickel-coloured metal cover for rectangular tubes

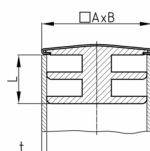


Standard Colours

- chrome-/ nickel coloured

Material

- Polyethylene (PE)



Product information

- Chrome-/nickel-coloured metal cover:
- The metal cover features normally has some play to the plug.
- The metal cover is conditionally scratch-resistant and is not considered to be high-gloss nickel-plated.
- The metal cover has limited corrosion resistance (outdoor application + humidity).
- *)= The plug can also be used from a wall thickness of 1 mm. We recommend checking this before installation.
- **) = The plug can also be used up to a wall thickness of 2 mm. We recommend checking this before installation.

Order Number	A	B	L	t
	mm	mm	mm	mm
CRTM 20x10	20	10	10	1-1,5
CRTM 20x15 **	20	15	10	1-1,5
CRTM 30x15 *	30	15	10	1,5-2
CRTM 40x20 *	40	20	11	1,5-2